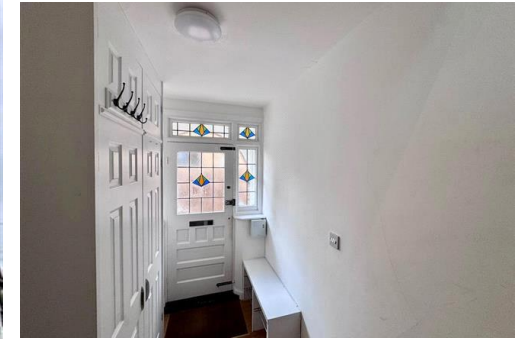




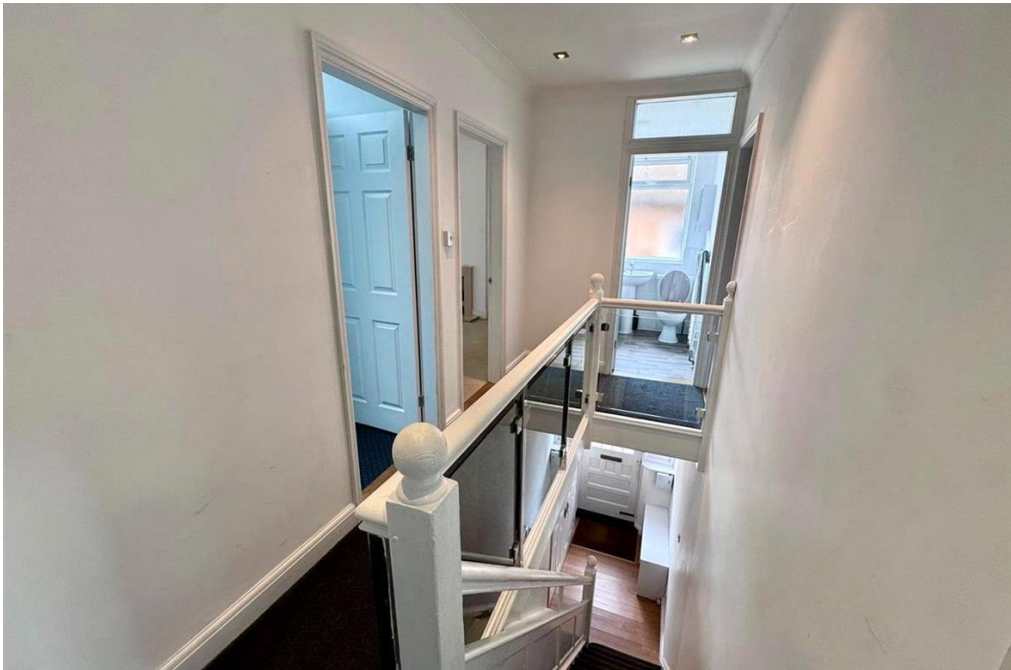
A BRUNSWICK ROAD, IPSWICH



2 Bed Apartment, East Ipswich Brunswick Road, IP4

**£995 pcm** 2 Bed Apartment, East Ipswich Brunswick Road, IP4





**\*PLEASE EMAIL VIA THE ADVERT PAGE TO ARRANGE A VIEWING\***

Power Property Management is pleased to offer this well-located **\*\*unfurnished two-bedroom apartment\*\*** on **\*\*Brunswick Road, IP4 (East Ipswich)\*\***, available on a **\*\*long-term let\*\*** for **\*\*£995 PCM\*\***.

Ideally positioned for convenient day-to-day living, the property is approximately a **\*\*7-minute drive to Ipswich Hospital\*\***, with a range of **\*\*local amenities close by\*\***. The apartment is also within easy reach of **\*\*Brunswick Park\*\***, offering a pleasant green space just a short walk away. Further benefits include **\*\*gas central heating\*\***, **\*\*air conditioning\*\***, and **\*\*double glazing\*\***. A **\*\*fridge freezer is included\*\***.

This apartment would particularly suit tenants seeking a practical location with strong transport links, nearby services, and access to local parks.

**\*\*Key features:\*\***

- Unfurnished two-bedroom apartment
- Brunswick Road, IP4 (East Ipswich)
- Long-term let
- £995 PCM
- Approx. 7 minutes' drive to Ipswich Hospital
- Local amenities nearby
- Short walk to Brunswick Park
- Gas central heating
- Air conditioning
- Double glazing
- Fridge freezer included

**Council Tax Band: A (Ipswich Council)**

**Deposit: £900**

**Holding Deposit: £150**

**Parking options: On Street**

- Apartment
- Double Bedroom
- Double Glazing
- Fitted Bathroom
- Fitted Kitchen
- Gas Central Heating
- On Street Parking

**Access**

**Kitchen/diner**

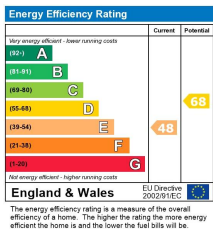
**Bedroom 1**

**Bedroom 2**

**Bathroom**

**Lounge**





Viewing by appointment only  
 Power Property Management  
 7 The Square, Martlesham Heath, Ipswich, Suffolk IP5 3SL  
 Tel: 01473 598892 Email: [info@powerproperty.co.uk](mailto:info@powerproperty.co.uk) Website: [powerproperty.co.uk/](http://powerproperty.co.uk/)

Whilst every effort is made to ensure the accuracy of these details, it should be noted that the measurements are approximate only. Floorplans are for representation purposes only and prepared according to the RICS Code of Measuring Practice by our floorplan provider. Therefore, the layout of doors, windows and rooms are approximate and should be regarded as such by any prospective tenant.