



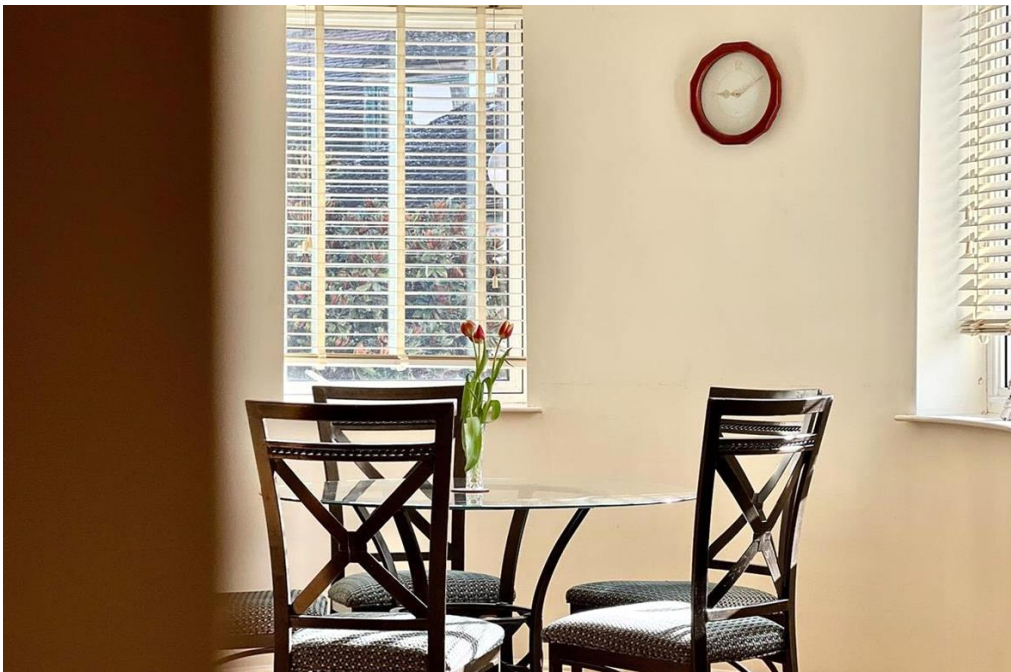
ST. NICHOLAS COURT, IPSWICH



2 Bed Apartment St. Nicholas Court, Ipswich,

£950 pcm 2 Bed Apartment St. Nicholas Court, Ipswich,





****PLEASE EMAIL FROM THE ADVERT PAGE TO ARRANGE A VIEWING****

A fantastic opportunity to rent this well presented, fully furnished ground floor apartment in the heart of Ipswich town centre.

Situated within the sought-after St. Nicholas Court development, this ground floor apartment offers modern living with the convenience of a prime central location — everything Ipswich has to offer is right on your doorstep.

Property Features:

- Ground floor apartment — no stairs, easy access
- Two well-proportioned bedrooms
- Master bedroom with private en-suite bathroom
- Separate family bathroom
- Spacious open plan living/dining area
- Fully furnished throughout — ready to move straight in
- Secure allocated parking
- Town centre location with excellent transport links, shops, restaurants, and amenities within walking distance

Council Tax Band: D

Deposit: £900

Holding Deposit: £150

Parking options: Underground

- Allocated Parking
- Apartment
- Close access to A14
- Double Bedroom
- Double Glazing
- Electric Heating
- Ensuite Bathroom
- Ensuite Shower
- Fitted Bathroom
- Fitted Kitchen
- Fully Furnished
- Garden
- Open Plan
- Town Center Location

Access

Lounge/diner

Kitchen

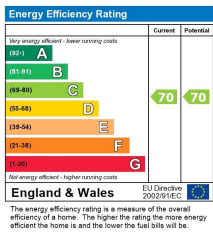
Bathroom

Master bedroom

En-suite

Bedroom 2





Viewing by appointment only
 Power Property Management
 7 The Square, Martlesham Heath, Ipswich, Suffolk IP5 3SL
 Tel: 01473 598892 Email: info@powerproperty.co.uk Website: powerproperty.co.uk/

Whilst every effort is made to ensure the accuracy of these details, it should be noted that the measurements are approximate only. Floorplans are for representation purposes only and prepared according to the RICS Code of Measuring Practice by our floorplan provider. Therefore, the layout of doors, windows and rooms are approximate and should be regarded as such by any prospective tenant.