



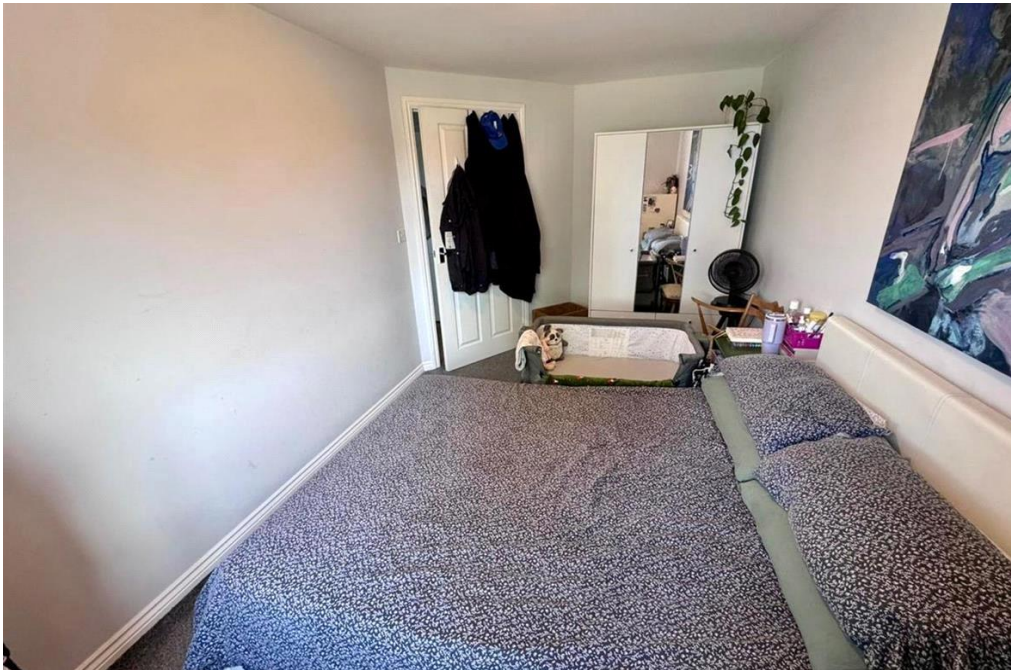
WINDSOR COURT, NEEDHAM MARKET, IPSWICH



2 Bed ground floor apartment - Windsor Court, Needham Market

£950 pcm 2 Bed ground floor apartment - Windsor Court, Needham Market





PLEASE EMAIL FROM ADVERT PAGE TO ARRANGE A VIEWING

A well-presented ground floor, two-bedroom apartment in the popular Windsor Court, Needham Market, close to all local amenities, offering generous living space, gas central heating and car parking. Ideal for professional tenants looking for a long-term home in a convenient location.

Key Features

- Ground floor apartment
- Close to all local amenities
- Two generous bedrooms
- Spacious lounge/diner
- Fitted kitchen
- Gas central heating
- Car parking
- Long term let

The Property

The apartment offers a practical layout with a bright lounge/diner providing plenty of space for both living and dining. The kitchen is well-proportioned and set up for everyday cooking and storage.

Council Tax Band: B (Babergh Mid Suffolk)

Deposit: £950

Holding Deposit: £150

Parking options: Residents

Electricity supply: Mains

Heating: Gas Mains

Water supply: Mains

Sewerage: Mains

- Allocated Parking
- Apartment
- Close access to A14
- Double Bedroom
- Double Glazing

- Fitted Bathroom
- Fitted Kitchen
- Gas Central Heating
- Open Plan

Access

Lounge/diner

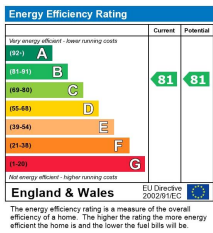
Kitchen

Bedroom 1

Bedroom 2

Bathroom





Viewing by appointment only
 Power Property Management
 7 The Square, Martlesham Heath, Ipswich, Suffolk IP5 3SL
 Tel: 01473 598892 Email: info@powerproperty.co.uk Website: powerproperty.co.uk/

Whilst every effort is made to ensure the accuracy of these details, it should be noted that the measurements are approximate only. Floorplans are for representation purposes only and prepared according to the RICS Code of Measuring Practice by our floorplan provider. Therefore, the layout of doors, windows and rooms are approximate and should be regarded as such by any prospective tenant.