

3 Bed Terrace, Witney Close, Ipswich, IP3

£1,250 pcm 3 Bed Terrace, Witney Close, Ipswich, IP3





****PLEASE EMAIL VIA THE ADVERT PAGE TO ARRANGE A VIEWING****

Power Property Management are pleased to offer this well-presented three-bedroom mid-terrace home, located in the popular Ravenswood area of Ipswich (Witney Close).

The property offers flexible living space across two floors and benefits from:

- Private entrance with barrier-controlled access into the car park
- Two generous double bedrooms on the ground floor, both with en suites, positioned to the rear of the property
- Communal garden overlooking the Ravenswood development with open views.
- Upstairs you'll find a very large open-plan sitting/dining room, a separate kitchen, and a third bedroom ideal as a nursery or home office.
- The kitchen includes a built-in dishwasher
- Excellent location within walking distance of local amenities and public transport, with quick access to the A14
- Nearby amenities include Waitrose, John Lewis, Lidi, and Costa Coffee

Available on a long-term let.
Double glazing, gas central heating.

Council Tax Band: C (Ipswich Council)

Deposit: £1,200

Holding Deposit: £150

Parking options: Off Street, Residents

Garden details: Communal Garden

- Allocated Parking
- Close access to A14
- Dishwasher
- Double Bedroom
- Double Glazing
- Fireplace
- Fitted Bathroom
- Fitted Kitchen
- Garden
- Gas Central Heating
- Off Road Parking
- Open Plan

Access

Bedroom 1

Bedroom 2

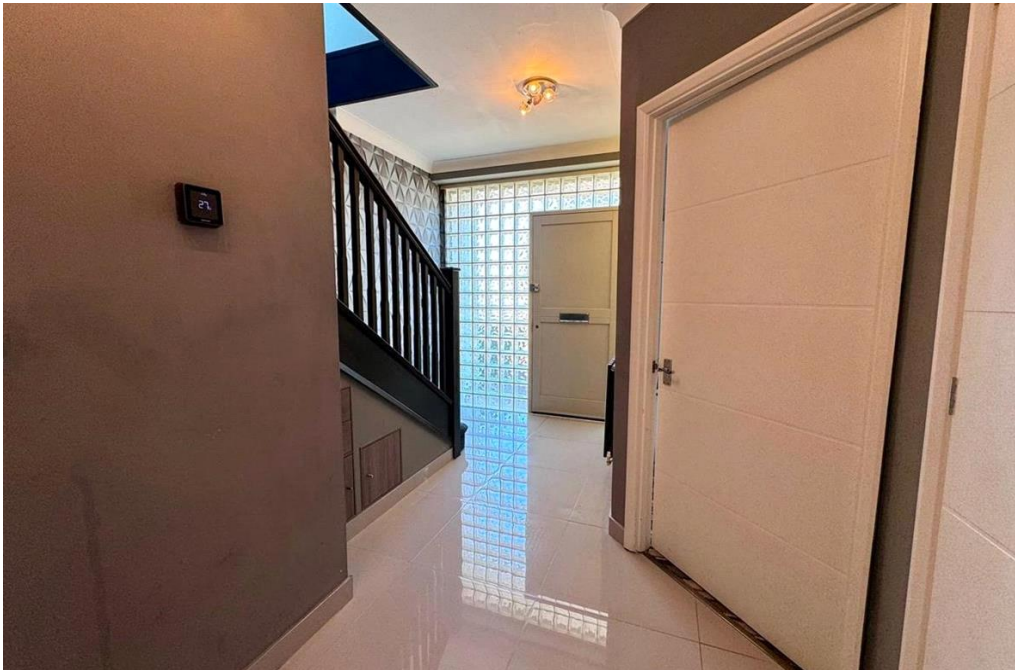
En-suite

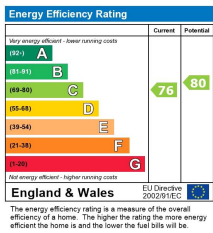
Bathroom

Lounge/diner

Kitchen

Rear Garden





Viewing by appointment only
 Power Property Management
 7 The Square, Martlesham Heath, Ipswich, Suffolk IP5 3SL
 Tel: 01473 598892 Email: info@powerproperty.co.uk Website: powerproperty.co.uk/

Whilst every effort is made to ensure the accuracy of these details, it should be noted that the measurements are approximate only. Floorplans are for representation purposes only and prepared according to the RICS Code of Measuring Practice by our floorplan provider. Therefore, the layout of doors, windows and rooms are approximate and should be regarded as such by any prospective tenant.